



## DAMEN STAN TUG® 1606 "PACINI"

### GENERAL

YARD NUMBER	503192
BASIC FUNCTIONS	Towing, mooring, pushing, fire fighting and survey operations
CLASSIFICATION	Bureau Veritas I ✕ Hull • MACH Tug Coastal Area incl. tonnage certificate
PAINTING	Epoxy paint system
FLAG	Italian
OWNER	Fratelli Neri s.p.a. Livorno

### DIMENSIONS

LENGTH O.A.	16.76 m
BEAM O.A.	5.94 m
DEPTH AT SIDES	2.54 m
DRAUGHT AFT	2.25 m
DISPLACEMENT	90 ton
SCANTLINGS	hull 10 mm, sheerstrake 20 mm

### TANK CAPACITIES

FUEL OIL	14.2 m <sup>3</sup>
FRESH WATER	1.1 m <sup>3</sup>
SEWAGE	0.7 m <sup>3</sup>
BILGE WATER/SLUDGE	0.5 m <sup>3</sup>

### PERFORMANCES

BOLLARD PULL AHEAD	15.7 ton(m)
SPEED	10.9 knots

### PROPULSION SYSTEM

MAIN ENGINES	2x Caterpillar C18 TA/A
TOTAL POWER	894 bkW (1216 bhp) at 1800 rpm
GEARBOXES	2x Reintjes WAF 264L 4.5:1
PROPELLERS	2x Kaplan II fixed pitch propellers
NOZZLES	2x 1350 mm Van de Giessen "Optima" with st.st. innerrings
RUDDERS	2x streamlined, double plates
STEERING GEAR	Powered hydraulic 2x 45°, with rudder indicator

### EQUIPMENT

GENERATOR SET	Caterpillar C2.2 NA, 230/400 V, 20.3 kVA, 50 Hz
ALTERNATOR 24 V	2x main engine driven
BATTERY SETS	2x 24 V 200 Ah (with changeover), 1x 24 V, 80 Ah
ALARM SYSTEM	Engines, gearboxes, bilge alarm, fire detection E.R.
BILGE/GS PUMP	Elec. driven, Sterling SIHI VWSI 5013, 15 m <sup>3</sup> /hr
FUEL OIL SYSTEM	Duplex filters, water separators + SOS valve
COOLING SYSTEM	Closed cooling system
WATER SYSTEM	Electr.driven freshwater hydrophore 24V 230 V, 30 liter
FRESH WATER HEATER	
VENTILATION	Mechanical ventilation in E.R. 10.500 m <sup>3</sup> /h

### DECK LAY-OUT

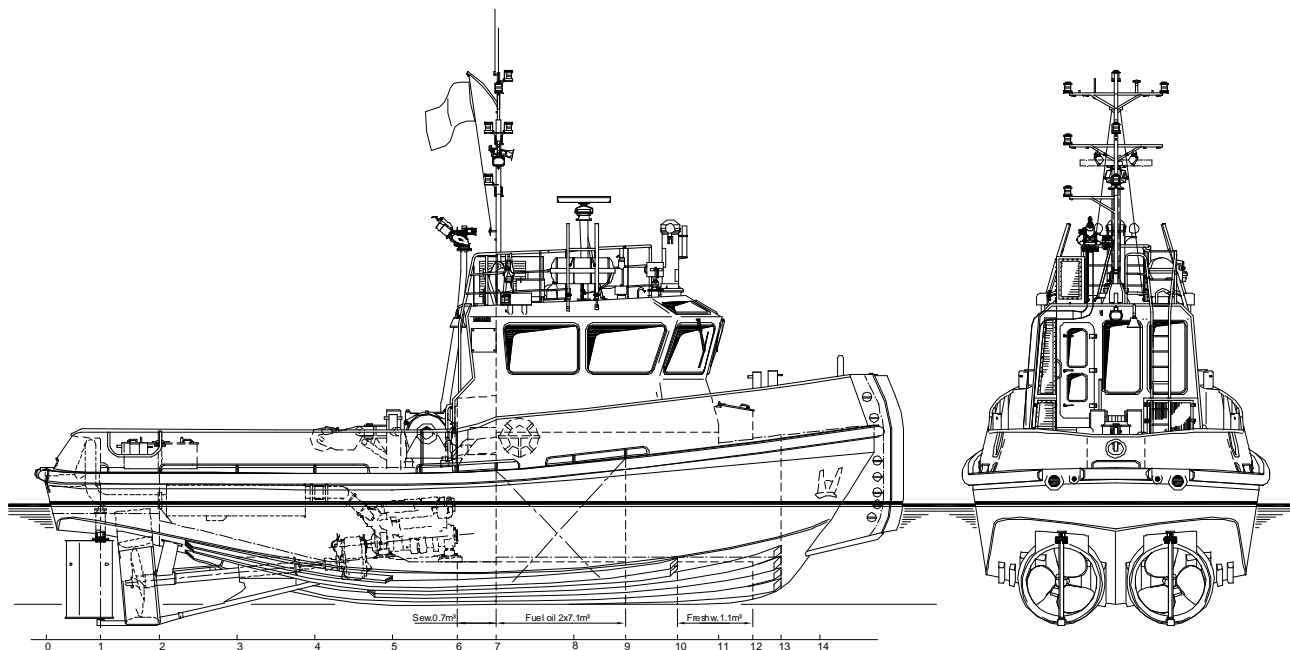
ANCHORS	2x 80 kg Pool (High Holding Power)
CHAIN (TOT.)	100 m shortlink chain 12.5 mm diameter
ANCHOR WINCH	Electrical for one anchor
COUPL. WINCHES /BOLLARDS	2 x manually operated 25 ton each
TOWING HOOK	Mampaey disc type, SWL 250 kN/ 25 ton
TOWING WINCH	Hydr. driven winch pull 7.5 ton at 10.9 m/min. 33 ton brake 200 m. diam. 24mm. wire
PUSH BOW	Cylindrical rubber fender Ø 380 mm
LIFERAFT	On top deck / ø second life raft
FENDERING	Continuous rubber D-fender around hull 200 x 200 mm

### ACCOMMODATION

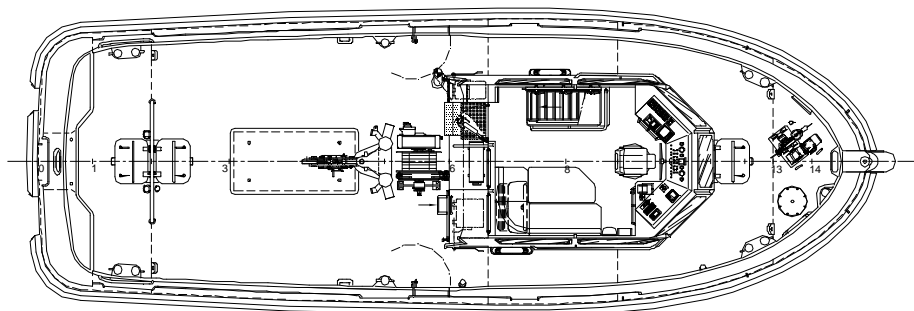
An air conditioned accommodation is completely insulated and finished with durable modern livings, acoustical Dampa ceiling in the wheelhouse and a floating floor. The air-conditioned wheelhouse is fitted with a corner settee with table and a control position. Below deck a galley, sanitary facilities and a store are provided. Crew cabin for 4 persons. Windows are fitted in aluminium frames.

### NAUTICAL AND COMMUNICATION EQUIPMENT

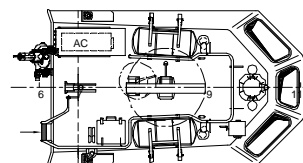
SEARCHLIGHT	Pesch 250 W
HORN	Electric, Ebuki E90
RADAR	Furuno FAR 2117
COMPASS	Magnetic Kotter type
GPS	Furuno GP-170D
ECHOSOUNDER	Furuno FE-800
VHF RADIO	Sailor Compact 6222 DSC
GMDSS AREA 1 Ø	MED approved equipment
AIS	Furuno FA-170
NAVTEX	Furuno NX-700
EPIRB	Jotron Tron-60s
SART	Jotron Tron Sart



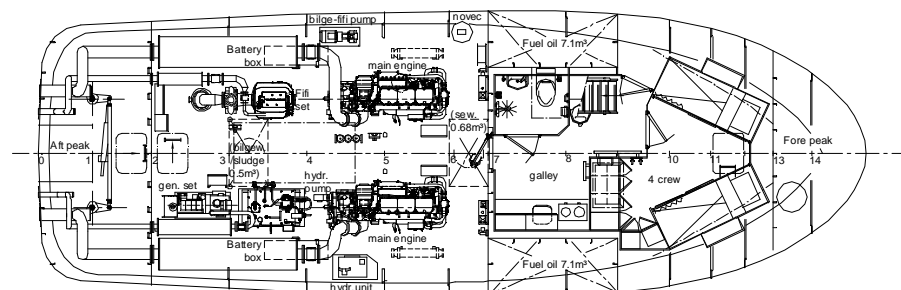
**Main deck**



**Top deck**



**Below Main deck**



# DAMEN STAN TUG® 1606

"PACINI"

**DAMEN**

DAMEN SHIPYARDS GORINCHEM

Member of the DAMEN SHIPYARDS GROUP



Industrieterrein Avelingen West 20  
4202 MS Gorinchem

P.O. Box 1  
4200 AA Gorinchem  
The Netherlands

phone +31 (0)183 63 99 11  
fax +31 (0)183 63 21 89

info@damen.com  
www.damen.com